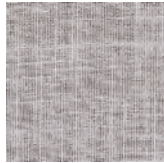
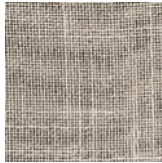


SPECIFICATIONS

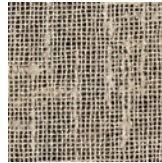
Sheers Polyester Linen



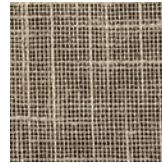
36013



36033



36045



36048



36060

End Usage

Drapery

Industry Usage

Contract / Office
Hospitality
Healthcare
Residential

Composition	Polyester Linen
Width	118" wide, Railroaded
Cleaning	Dry Clean Only
Fire Rating	Treated to pass NFPA 701

Item #	Content	Repeat
36013	95/5 P/L	
36014	95/5 P/L	
36015	95/5 P/L	
36017	95/5 P/L	
36018	95/5 P/L	
36019	95/5 P/L	
36020	95/5 P/L	
36021	95/5 P/L	
36022	95/5 P/L	
36024	95/5 P/L	
36032	95/5 P/L	
36033	95/5 P/L	
36036	80/20 P/L	
36037	80/20 P/L	
36043	95/5 P/L	
36044	95/5 P/L	
36045	95/5 P/L	
36046	90/10 P/L	
36047	90/10 P/L	
36048	90/10 P/L	
36059	97/3 P/L	9 1/4" H
36060	97/3 P/L	1" H
36061	95/5 P/L	1" H
36062	97/3 P/L	3 1/2" H
36064	97/3 P/L	6" H



24 Federal Plaza
Bloomfield, NJ 07003
973-680-4488
cortexfabrics.com