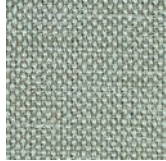


SPECIFICATIONS

200LF BT



01



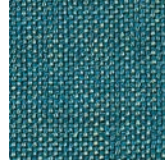
29



67



82



93

End Usage

Upholstery

Industry Usage

Contract / Office
Hospitality
Healthcare

Composition	100% polyester, acrylic backed
Finish Standard	Soil & stain
Finish Options	Nano Tex* or Alta*
Width	55"
Country of Origin	China
Cleaning	Code: WS or SW
Color Fastness	Lightfastness Class 4.0 Lightfastness Hours - AATCC 16 Option 1 or 3 Grade 4 minimum at 60
Abrasion	Wyzenbeek cotton duck - 200,000 double rubs ASTM D4157
Fire Rating	Cal 117-2013 NFPA 260 UFAC Class 1

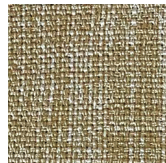


24 Federal Plaza
Bloomfield, NJ 07003
973-680-4488
cortexfabrics.com

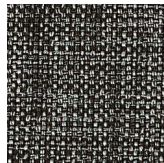
* Additional cost

SPECIFICATIONS

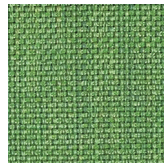
200LF FR



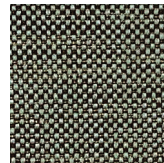
183



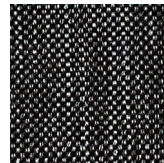
155



137



118



100

End Usage

Drapery

Industry Usage
Contract / Office
Hospitality
Healthcare

Composition	100% polyester
Finish	FR-NFPA 701
Width	55"
Country of Origin	China
Cleaning	Code: WS
Color Fastness	Lightfastness Class 4.0 Lightfastness Hours - AATCC 16 Option 1 or 3 Grade 4 minimum at 60
Abrasion	Wyzenbeek cotton duck - 200,000 double rubs ASTM D4157
Fire Rating	NFPA 701



24 Federal Plaza
Bloomfield, NJ 07003
973-680-4488
cortexfabrics.com